

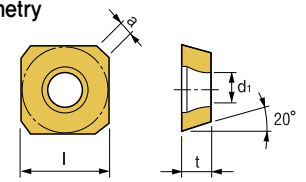
SEXT-MR



■ USE

■ Geometry

■ Recommendation

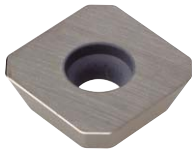


Available Holder	Designation	ASA	Coated Carbide							Cermet			Uncoated Carbide				(mm)			
			NCM325	NCM335	NCM320K	PC130	PC230	PC3530	PC9530	PC215K	CN20	CN30		H01	MA2	ST20	G10	l(=d)	t	a
FMAC3000R-□ FMACM3000R-□ FMAS3000R	SEXT0903AGSN-MR																9.525	3.18	2.11	3.4
FMAC4000R-□ FMACM4000R-□ FMAS4000R	SEXT14M4AGSN-MR																14.0	4.0	2.64	4.4

P. 325, 326

● : Stock Item ○ : Under preparing for stock

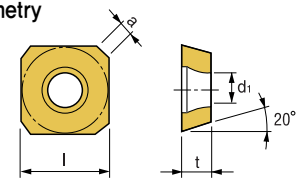
SEEW



■ USE

■ Geometry

■ Recommendation



Available Holder	Designation	ASA	Coated Carbide							Cermet			Uncoated Carbide				(mm)			
			NCM325	NCM335	NCM320K	PC130	PC230	PC3530	PC9530	PC215K	CN20	CN30		H01	MA2	ST20	G10	l(=d)	t	a
FMAC3000R-□ FMACM3000R-□ FMAS3000R	SEEW0903AGTN																9.525	3.18	2.11	3.4
FMAC4000R-□ FMACM4000R-□ FMAS4000R	SEEW14M4AGTN																14.0	4.0	2.64	4.4

P. 325, 326

● : Stock Item ○ : Under preparing for stock

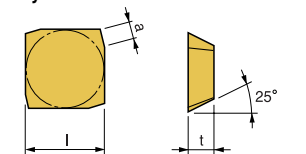
SFAN, SFCN



■ USE

■ Geometry

■ Recommendation



Available Holder	Designation	ASA	Coated Carbide					Cermet			Uncoated Carbide			(mm)				
			NCM325	NCM335	PC130	PC230	PC215K	CN20	CN30		ST20	H01	G10	l(=d)	t	a		
EF4□□□	SFAN 1203EFR	42														12.7	3.18	2.5
	SFCN 1203EFR	42														12.7	3.18	2.5

P. 283

● : Stock Item ○ : Under preparing for stock