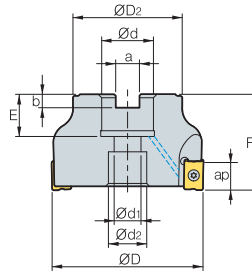
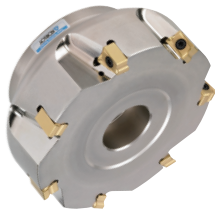


RM4PC(M)3000



• AR: -6°
• RR: -19°~-13°

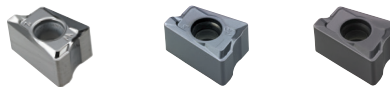
(mm)

Designation		ØD	ØD2	Ød	Ød1	Ød2	a	b	E	F	ap		Bolt	
RM4PCM	3040HR	4	40	35	16	9	14	8.4	5.6	19	40	9.0	0.24	SB0825
	3040HR-M	5	40	35	16	9	14	8.4	5.6	19	40	9.0	0.23	SB0825
	3050HR	5	50	42	22	11	18	10.4	6.3	20	40	9.0	0.36	SB1025
	3050HR-M	7	50	42	22	11	18	10.4	6.3	20	40	9.0	0.35	SB1025
	3063HR	7	63	49	22	11	18	10.4	6.3	20	40	9.0	0.61	SB1025
	3063HR-M	9	63	49	22	11	18	10.4	6.3	20	40	9.0	0.6	SB1025
RM4PC (RM4PCM)	3080HR	8	80	57	25.4 (27)	14	20	9.5 (12.4)	6.0 (7.0)	25 (23)	50	9.0	1.25 (1.24)	SB1230
	3080HR-M	10	80	57	25.4 (27)	14	20	9.5 (12.4)	6.0 (7.0)	25 (23)	50	9.0	1.24 (1.23)	SB1230
	3100HR	9	100	67	31.75(32)	18	26	12.7 (14.4)	8.0 (8.0)	33 (25)	63 (50)	9.0	2.46 (1.94)	SB1630
	3100HR-M	12	100	67	31.75 (32)	18	26	12.7 (14.4)	8.0 (8.0)	33 (25)	63 (50)	9.0	2.44 (1.93)	SB1630

() Metric size

Available inserts

LNEX-MA LNM(E)X-MF LNM(E)X-MM



Designation	Cermat		Coated											Uncoated			page	
	CN2000	CN30	NCM325	NC5330	NCM535	NCM545	PC2505	PC2010	PC3600	PC3700	PC8510	PC9530	PC9540	PC5300	PC5400	ST30A		G10
LNEX	100605PNR-MF																	
	100605PNR-MM								●	●				●	●			
	100605PNR-MA																	●
	100608PNR-MF									●	●			●	●			
	100608PNR-MM										●			●	●			
LNMX	100605PNR-MF								●	●				●	●			
	100605PNR-MM								●	●	●			●	●			
	100608PNR-MF								●	●				●	●			
	100608PNR-MM								●	●				●	●			

E11

Available arbors

Designation	Available arbors	
	RM4PC	RM4PCM
RM4PC(M)	3040HR	-
	3040HR-M	
	3050HR	BT□□-FMC22-□□
	3050HR-M	
	3063HR	
	3063HR-M	

Designation	Available arbors	
	RM4PC	RM4PCM
RM4PC(M)	3080HR	BT□□-FMA25.4-□□
	3080HR-M	
	3100HR	BT□□-FMA31.75-□□
	3100HR-M	

Parts

Specification		
Ø40-Ø100	FTKA0307	TW09S

Available inserts E11 Available arbors and bolt E400~E402