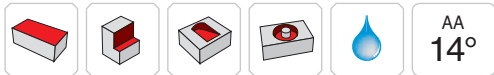
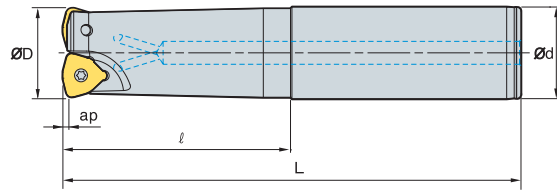


# HRMDS09



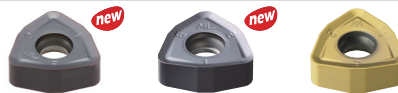
AA  
14°  
• AR: -7°  
• RR: -17° ~ -25°

(mm)

Designation		ØD	Ød	ℓ	L	ap	
HRMDS 0925HR-2S25	2	25	25	60	140	1.5	0.5
0925HR-2M25	2	25	25	120	200	1.5	0.6
0925HR-2L25	2	25	25	180	300	1.5	1
0926HR-2S25	2	26	25	60	140	1.5	0.5
0926HR-2M25	2	26	25	60	200	1.5	0.7
0926HR-2L25	2	26	25	60	300	1.5	1
0930HR-3S32	3	30	32	70	150	1.5	0.8
0930HR-3M32	3	30	32	120	200	1.5	1
0930HR-3L32	3	30	32	180	300	1.5	1.5
0932HR-3S32	3	32	32	70	150	1.5	0.8
0932HR-3M32	3	32	32	120	200	1.5	1.1
0932HR-3L32	3	32	32	180	300	1.5	1.7
0933HR-3S32	3	33	32	70	150	1.5	0.8
0933HR-3M32	3	33	32	70	200	1.5	1.1
0933HR-3L32	3	33	32	70	300	1.5	1.7
0935HR-4S32	4	35	32	50	150	1.5	0.9
0935HR-4M32	4	35	32	50	200	1.5	1.1
0935HR-4L32	4	35	32	50	300	1.5	1.7
0940HR-4S32	4	40	32	50	150	1.5	0.9
0940HR-4M32	4	40	32	50	250	1.5	1.5
0940HR-4L32	4	40	32	50	300	1.5	1.8
0940HR-4S40	4	40	40	60	150	1.5	1.3

## Available inserts

WNMX-MF      WNMX-ML      WNMX-MM



Designation	Cermet		Coated										Uncoated			page			
	CN2000	CN30	NCM325	NC5330	NCM635	NCM645	PC2505	PC2510	PC3600	PC3700	PC6510	PC9530	PC9540	PC5300	PC5400		ST30A	G10	H01
WNMX 09T316ZNN-MF								●	●					●	●				E28
09T316ZNN-ML														●	●				
09T316ZNN-MM							●	●	●		●			●	●				

## Parts

Specification		
Ø25~Ø40	FTKA0307	TW09S

Available inserts E28