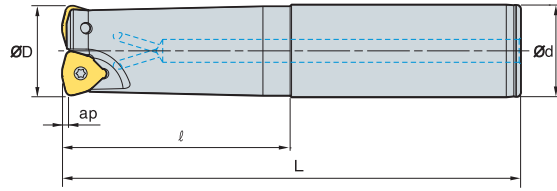


HRMDS06 new



AA
14°

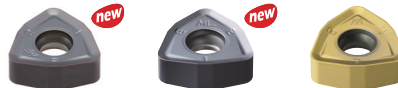
• AR: -7°
 • RR: -17°~ -25°

(mm)

Designation		ØD	Ød	ℓ	L	ap	
HRMDS 0616HR-2S16	2	16	16	30	110	1.0	0.15
0616HR-2M16	2	16	16	70	150	1.0	0.20
0616HR-2L16	2	16	16	100	200	1.0	0.26
0617HR-2S16	2	17	16	20	110	1.0	0.15
0617HR-2M16	2	17	16	20	150	1.0	0.21
0617HR-2L16	2	17	16	20	200	1.0	0.28
0618HR-2S16	2	18	16	20	110	1.0	0.15
0618HR-2M16	2	18	16	20	150	1.0	0.21
0618HR-2L16	2	18	16	20	200	1.0	0.28
0620HR-2S20	2	20	20	50	130	1.0	0.28
0620HR-2M20	2	20	20	100	180	1.0	0.38
0620HR-2L20	2	20	20	130	250	1.0	0.53
0621HR-2S20	2	21	20	20	130	1.0	0.29
0621HR-2M20	2	21	20	20	180	1.0	0.40
0621HR-2L20	2	21	20	20	250	1.0	0.57
0625HR-3S25	3	25	25	60	140	1.0	0.44
0625HR-3M25	3	25	25	80	180	1.0	0.57
0625HR-3L25	3	25	25	120	250	1.0	0.80
0626HR-3S25	3	26	25	30	140	1.0	0.46
0626HR-3M25	3	26	25	30	180	1.0	0.60
0626HR-3L25	3	26	25	30	250	1.0	0.84
0632HR-4S32	4	32	32	70	150	1.0	0.82
0632HR-4M32	4	32	32	100	200	1.0	1.10
0632HR-4L32	4	32	32	180	300	1.0	1.66
0633HR-4S32	4	33	32	40	200	1.0	1.14
0633HR-4M32	4	33	32	40	250	1.0	1.43
0633HR-4L32	4	33	32	40	300	1.0	1.73

Available inserts

WNMX-MF WNMX-ML WNMX-MM



Designation	Cermet		Coated										Uncoated			page			
	CN2000	CN30	NCM325	NC5330	NCM535	NCM545	PC2505	PC2510	PC3600	PC3700	PC6510	PC9530	PC9540	PC5300	PC5400		ST30A	G10	H01
WNMX 060312ZNN-MF									●					●	●				E28
060312ZNN-ML														●	●				
060312ZNN-MM							●	●	●	●				●	●				

Parts

Specification		
Ø16~Ø33	ETNA02506	TW07S

Available inserts E28

