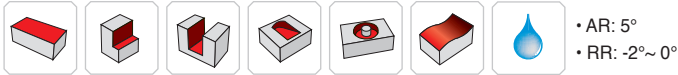
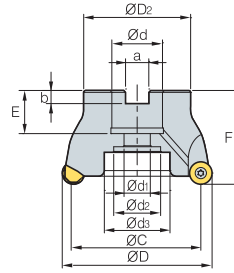


FMRC(M)4000 new



Designation		⚙️	ØD	ØC	ØD2	Ød	Ød1	Ød2	Ød3	a	b	E	F	ap		Insert size
FMRCM	4050HRP-4	4	50	38	45	22	11	18	-	10.4	6.3	20	40	6	0.26	12
	4050HRP-5	5	50	38	45	22	11	18	-	10.4	6.3	20	40	6	0.28	12
	4052HRP-5	5	52	40	45	22	11	18	-	10.4	6.3	20	40	6	0.30	12
	4063HRP-5	5	63	51	50	22	11	18	-	10.4	6.3	20	40	6	0.44	12
	4063HRP-6	6	63	51	50	22	11	18	-	10.4	6.3	20	40	6	0.48	12
	4066HRP-6	6	66	54	50	22	11	18	-	10.4	6.3	20	40	6	0.50	12
FMRC (FMRCM)	4080HRP-6	6	80	68	57	25.4 (27)	14	25	35	9.5 (12.4)	6 (7)	24 (23)	50	6	0.92	12
	4080HRP-7	7	80	68	57	25.4 (27)	14	25	35	9.5 (12.4)	6 (7)	24 (23)	50	6	0.90	12
	4100HRP-7	7	100	88	67	31.75 (32)	18	26	42	12.7 (14.4)	8 (8)	32 (25)	63 (53)	6	1.46	12

() Metric size

Available inserts

		RPCT-MA		RPET-ML			RPMT-MF			RPMT-MM		RPMW							
Designation		Cermet		Coated										Uncoated		page			
		CN2000	CN30	NCM325	NC330	NCM535	NCM545	PC2505	PC2510	PC3600	PC3700	PC6510	PC9530	PC9540	PC5300		PC5400	ST30A	H01
RPCT	1204M0-MA																		●
RPET	1204M0E-ML														●	●			
RPMT	1204M0E-MF													●	●	●			
	1204M0S-MM							●	●	●	●			●	●	●			
RPMT	1204M0S-MM							●	●	●	●			●	●	●			
RPMW	1204M0S1							●	●	●	●			●	●	●			
	1204M0S2													●	●				

Available arbors

Designation		Ød	Available arbors
FMRCM	4050HRP-4	22	BT□□-FMC22-□□
	4050HRP-5		
	4052HRP-5		
	4063HRP-5		
	4063HRP-6		
	4066HRP-6		
FMRC (FMRCM)	4080HRP-6	25.4	BT□□-FMA25.4-□□
		27	BT□□-FMC27-□□
	4080HRP-7	25.4	BT□□-FMA25.4-□□
		27	BT□□-FMC27-□□
	4100HRP-7	31.75	BT□□-FMA31.75-□□
		32	BT□□-FMC32-□□

Parts

Specification		
Ø50~Ø100	FTKA0410	TW15S

Available inserts E16 Available arbors and bolt E400~E402