

# RM8AC(M)4000

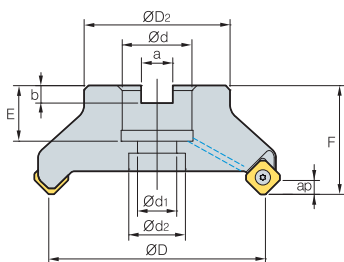
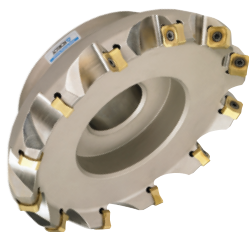


Fig. 1

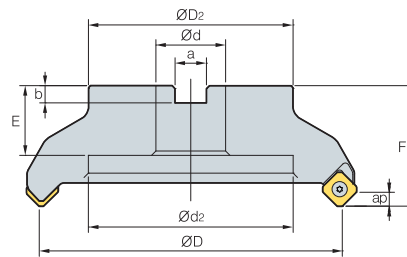


Fig. 2



AA  
45°

- AR: -6°
- RR: -9°~ -6°

(mm)

Designation		ØD	ØD2	Ød	Ød1	Ød2	a	b	E	F	ap		Fig.	
RM8ACM	4050HR-M	4	50	49	22	11	18	10.4	6.3	20	40	6.0	0.5	1
	4050HR-H	6	50	49	22	11	18	10.4	6.3	20	40	6.0	0.5	1
	4063HR-M	6	63	49	22	11	18	10.4	6.3	20	40	6.0	0.7	1
	4063HR-H	8	63	49	22	11	18	10.4	6.3	20	40	6.0	0.7	1
RM8AC (RM8ACM)	4080HR	5	80	57	25.4 (27)	14	20	9.5 (12.4)	6 (7)	25 (23)	50	6.0	1.2	1
	4080HR-M	7	80	57	25.4 (27)	14	20	9.5 (12.4)	6 (7)	25 (23)	50	6.0	1.2	1
	4080HR-H	10	80	57	25.4 (27)	14	20	9.5 (12.4)	6 (7)	25 (23)	50	6.0	1.3	1
	4100HR	6	100	67	31.75 (32)	18	26	12.7 (14.4)	8	33 (25.5)	63 (50)	6.0	1.7	1
	4100HR-M	8	100	67	31.75 (32)	18	26	12.7 (14.4)	8	33 (25.5)	63 (50)	6.0	1.7	1
	4100HR-H	12	100	67	31.75 (32)	18	26	12.7 (14.4)	8	33 (25.5)	63 (50)	6.0	1.7	1
	4125HR	8	125	87	38.1 (40)	22	32	15.9 (16.4)	10 (9)	36 (30)	63	6.0	3.6	1
	4125HR-M	10	125	87	38.1 (40)	22	32	15.9 (16.4)	10 (9)	36 (30)	63	6.0	3.6	1
	4125HR-H	16	125	87	38.1 (40)	22	32	15.9 (16.4)	10 (9)	36 (30)	63	6.0	3.7	1
	4160R	10	160	107	50.8 (40)	-	107	19 (16.4)	11 (9)	38 (32)	63	6.0	4.8	2
	4160R-M	12	160	107	50.8 (40)	-	107	19 (16.4)	11 (9)	38 (32)	63	6.0	5.3	2
	4160R-H	20	160	107	50.8 (40)	-	107	19 (16.4)	11 (9)	38 (32)	63	6.0	5.4	2
	4200R-M	14	200	130	47.625 (60)	-	135	25.4 (25.7)	14	38 (32)	63	6.0	7.1	2
	4200R-H	24	200	130	47.625 (60)	-	135	25.4 (25.7)	14	38 (32)	63	6.0	7.1	2
	4250R-M	16	250	180	47.625 (60)	-	180	25.4 (25.7)	14	38 (32)	63	6.0	11.9	2
	4250R-H	30	250	180	47.625 (60)	-	180	25.4 (25.7)	14	38 (32)	63	6.0	12.0	2
4315R	18	315	240	47.625 (60)	-	238	25.4 (25.7)	14	38	63	6.0	18.8 (18.6)	2	
4315R-M	20	315	240	47.625 (60)	-	238	25.4 (25.7)	14	38	63	6.0	18.8 (18.6)	2	
4400R-M	28	400	260	47.625 (60)	-	238	25.4 (25.7)	14	38	80	6.0	37.7 (37.4)	2	

( ) Metric size

## Available inserts

SNM(E)X-MF    SNEX-ML    SNM(E)X-MM    SNEX-MA    SNEX-W



Designation	Cermet		Coated							Uncoated		page				
	CN2000	CN30	NCM925	NC5330	NCM635	NCM645	PC2505	PC2010	PC3600	PC6510	PC9530		PC9540	PC5300	PC5400	ST30A
SNEX 1206ANN-MF																
SNEX 1206ANN-ML																
SNEX 1206ANN-MM																E22
SNEX 1206ANN-MA																E23
SNEX 1206ANN-W																E24
SNMX 1206ANN-MF																
SNMX 1206ANN-MM																

## Available arbors

Designation	Available arbors	
	RM8AC	RM8ACM
RM8ACM 4050HR-□	-	BT□□-FMC22-□□
RM8ACM 4063HR-□	-	BT□□-FMC27-□□
RM8AC 4080HR-□	BT□□-FMA25.4-□□	BT□□-FMC32-□□
RM8AC 4100HR-□	BT□□-FMA31.75-□□	BT□□-FMC32-□□
RM8AC 4125HR-□	BT□□-FMA38.1-□□	BT□□-FMB40-□□
RM8AC 4160R-□	BT□□-FMA50.8-□□	BT□□-FMC40-□□
RM8AC 4200R-□		
RM8AC 4250R-□	BT□□-FMA47.625-□□	BT□□-FMB60-□□
RM8AC 4315R-□		
RM8AC 4400R-□		

## Parts

Specification		
Ø50~Ø400	FTKA0410	TW15S

Available inserts E22~E24

Available arbors and bolt E400~E402