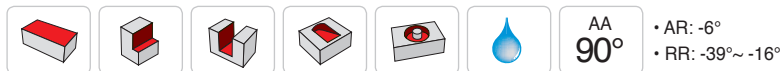
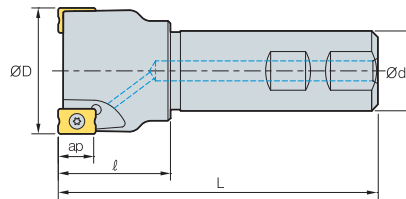


RM4PS3000

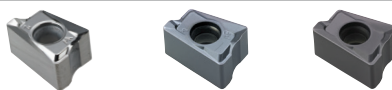


(mm)

Designation		ØD	Ød	l	L	ap	
RM4PS 3014HR-S16	1	14	16	23	90	9.0	0.11
3016HR-S16	1	16	16	25	90	9.0	0.11
3018HR-S16	2	18	16	23	90	9.0	0.12
3020HR-S20	2	20	20	30	100	9.0	0.21
3020HR-S20M	3	20	20	30	100	9.0	0.21
3025HR-S25	2	25	25	35	115	9.0	0.38
3025HR-S25M	3	25	25	35	115	9.0	0.38
3032HR-S32	3	32	32	40	125	9.0	0.69
3032HR-S32M	4	32	32	40	125	9.0	0.7
3040HR-S32	4	40	32	42	130	9.0	0.86
3040HR-S32M	5	40	32	42	130	9.0	0.85
3040HR-S40	4	40	40	42	130	9.0	1.17
3040HR-S40M	5	40	40	42	130	9.0	1.17
3040HR-S42	4	40	42	42	130	9.0	1.26
3040HR-S42M	5	40	42	42	130	9.0	1.25
3050HR-S32	5	50	32	45	135	9.0	1.06
3050HR-S32M	7	50	32	45	135	9.0	1.05
3050HR-S40	5	50	40	45	135	9.0	1.38
3050HR-S40M	7	50	40	45	135	9.0	1.37
3050HR-S42	5	50	42	45	135	9.0	1.48
3050HR-S42M	7	50	42	45	135	9.0	1.48

Available inserts

LNEX-MA LNM(E)X-MF LNM(E)X-MM



Designation	Cermet		Coated										Uncoated			page		
	CN2000	CN30	NCM325	NC5330	NCM535	NCM545	PC2505	PC2010	PC3600	PC3700	PC6510	PC9530	PC9540	PC5300	PC5400		ST30A	G10
LNEX	100605PNR-MF									●	●			●	●			
	100605PNR-MM								●	●				●	●			
	100605PNR-MA																	●
	100605PNL-MM										●			●	●			
	100608PNR-MF									●	●			●	●			
100608PNR-MM										●	●		●	●				
LNMX	100605PNR-MF							●		●				●	●			
	100605PNR-MM							●	●	●	●			●	●			
	100608PNR-MF							●		●				●	●			
	100608PNR-MM							●	●	●				●	●			

Parts

Specification		
Ø14~Ø50	FTKA0307	TW09S

Available inserts E11

