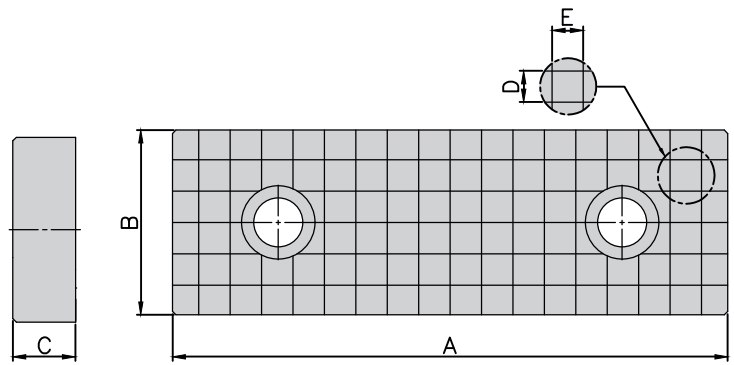
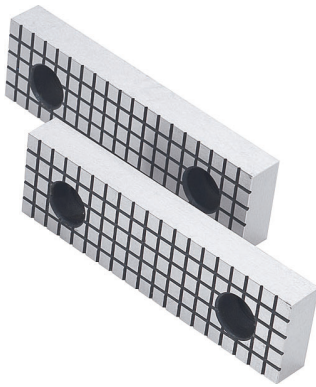


K Geriffelte Backen / Rillenbacken (Paar)

Serrated jaws (Pair)
Mors cannelés (Paire)



Bestell-Nr. Order no. Référence	Ausführung Version Version	A	B	C	D	E	
Z.KS.GR.AT409T	ATW-40 ATD-460	102	35	15	9	9	
Z.KS.GR.AT509T	ATW-50 ATD-570	126	38,1	17	9	9	
Z.KS.GR.AT609T	ATW-675 ATW-689 MG-60 AMC-60 TLD-60 HLD-60	151	44,5	18	8	8	
Z.KS.GR.AT809T	ATW-810	206	60	24,2	8	8	
Z.KS.GR.AMC409T	AMC-40	102	40	21	9	9	
Z.KS.GR.AVQ4405	AVQ-100 AVL-100	102	45	15	9	9	
Z.KS.GR.AVQ5405	AVQ-125 AVL-125	124,7	53	15	9	9	
Z.KS.GR.AVQ6405	AVQ-160 AVL-160 ALQ-160 AOM-160	159,2	53	18	9	9	
Z.KS.GR.AVQ8405	AVQ-200 AVL-200 ALQ-200 AOM-200	200	56	18	9	9	
Z.KS.GR.HP403T	HP-40 MP-40	104	36	11	8	8	
Z.KS.GR.HP503T	HP-50 MP-50	130	46	15	8	8	
Z.KS.GR.HP603T	HP-60 MP-60	154	54	17	8	8	
Z.KS.GR.HP803T	HP-80 MP-80	206	100	30	8	8	
Z.KS.GR.AVC6405	AVC AVM-160	160	58	15	8	8	
Z.KS.GR.AVC8405	AVC AVM-200	200	63	18	8	8	
Z.KS.GR.TLD4405	TLD-40	2 Paar 2 pair 2 paire	102	38	15	9	9
Z.KS.GR.ALD6405	ALD-60	2 Paar 2 pair 2 paire	152	58	49	25	25

11

Verwendung:

Zur Erhöhung der spezifischen Flächenpressung

Application:

To increase the specific contact pressure per unit area

Usage:

Pour augmentation de la pression spécifique de la surface

Werkstoff:

Stahl S50C | Gehärtet HRC 53 +/-2

Material:

Steel S50C | Hardened HRC 53 +/-2

Matériel:

Acier S50C | Trempé HRC 53 +/-2