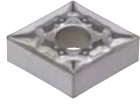
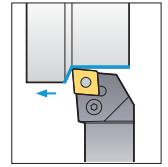
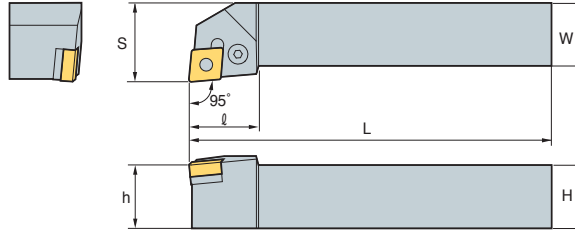


# B Lever Lock System

## PCLNR/L



CN□□



95°

• R type insert (mm)

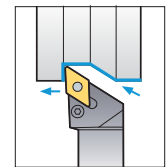
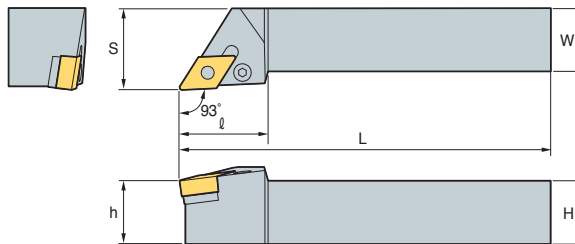
Designation	H	W	L	S	h	l	Insert	Lever	Screw	Shim	Shim Pin	Wrench	Shim Pin Punch
<b>PCLNR/L 1616-H09</b>	16	16	100	20	16	20	CN□□ 0903□□	LV3	VHX0617	SC32	SP3	HW25L	LSPS3
<b>2020-K09</b>	20	20	125	25	20	22							
<b>2525-M09</b>	25	25	150	32	25	22							
<b>1616-H12</b>	16	16	100	20	16	28	CN□□ 1204□□	LV4	VHX0821	SC42	SP4	HW30L	LSPS4
<b>2020-K12</b>	20	20	125	25	20	28							
<b>2525-M12</b>	25	25	150	32	25	28							
<b>3225-P12</b>	32	25	170	32	32	28							
<b>3232-P12</b>	32	32	170	40	32	28							
<b>2525-M16</b>	25	25	150	32	25	33	CN□□ 1606□□	LV5	VHX0825	SC53	SP5	HW30L	LSPS5
<b>3232-P16</b>	32	32	170	40	32	33							
<b>2525-M19</b>	25	25	150	32	25	36	CN□□ 1906□□	LV6N	VHX1027N	SC63N	SP6N	HW40L	LSPS6
<b>3225-P19</b>	32	25	170	32	32	36							
<b>3232-P19</b>	32	32	170	40	32	36							
<b>4040-P19</b>	40	40	170	50	40	36							
<b>4040-S19</b>	40	40	250	50	40	36							
<b>4040-S25</b>	40	40	250	50	40	47	CN□□ 2509□□	LV8N	VHX1236N	SC84N	SP8N	HW50L	LSPS8
<b>5050-T25</b>	50	50	300	60	50	47							
<b>4040-S25-5</b>	40	40	250	50	40	47	CN□□ 2507□□	LV8N	VHX1236N	SC84N	SP8N	HW50L	LSPS8
<b>5050-S25-5</b>	50	50	300	60	50	47							
<b>PCLNR/L 1616-H09N</b>	16	16	100	20	16	20	CN□□ 0903□□	LV3N	VHX0617N	SC32N	SP3	HW25L	LSPS3
<b>2020-K09N</b>	20	20	125	25	20	22							
<b>2525-M09N</b>	25	25	150	32	25	22							
<b>1616-H12N</b>	16	16	100	20	16	28	CN□□ 1204□□	LV4N	VHX0817N VHX0820N	SC42N	SP4N	HW30L	LSPS4
<b>2020-K12N</b>	20	20	125	25	20	28							
<b>2525-M12N</b>	25	25	150	32	25	28							
<b>3225-P12N</b>	32	25	170	32	32	28							
<b>3232-P12N</b>	32	32	170	40	32	28							
<b>2525-M16N</b>	25	25	150	32	25	33	CN□□ 1606□□	LV5N	VHX0820AN	SC53N	SP5N	HW30L	LSPS5
<b>3232-P16N</b>	32	32	170	40	32	33							
<b>2525-M19N</b>	25	25	150	32	25	38	CN□□ 1906□□	LV6N	VHX1027N	SC63N	SP6N	HW40L	LSPS6
<b>4040-S19N</b>	40	40	250	50	40	36							

➔ Applicable inserts B28~B35

## PDJNR/L



DN□□



93°

• R type insert (mm)

Designation	H	W	L	S	h	l	Insert	Lever	Screw	Shim	Shim Pin	Wrench	Shim Pin Punch
<b>PDJNR/L 1616-H11</b>	16	16	100	20	16	25	DN□□ 1104□□	LV3	VHX0617	SD317	SP3	HW25L	LSPS3
<b>2020-K11</b>	20	20	125	25	20	25							
<b>2525-M11</b>	25	25	150	32	25	30							
<b>2020-K15</b>	20	20	125	25	20	35	DN□□ 1506□□	LV4B	VHX0821	SD42	SP4	HW30L	LSPS4
<b>2525-M15</b>	25	25	150	32	25	35							
<b>3225-P15</b>	32	25	170	32	32	35							
<b>3232-P15</b>	32	32	170	40	32	35							
<b>2020-K15-3</b>	20	20	125	25	20	35							
<b>2525-M15-3</b>	25	25	150	32	25	35	DN□□ 1504□□	LV4	VHX0821	SD42	SP4	HW30L	LSPS4
<b>3232-P15-3</b>	32	32	170	40	32	35							

➔ Applicable inserts B36~B42



B

Turning