

MINIMILL

Nut- und Formzirkularfräsen

groove milling by circular interpolation

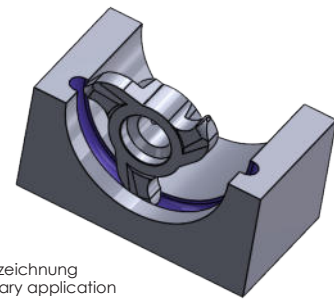
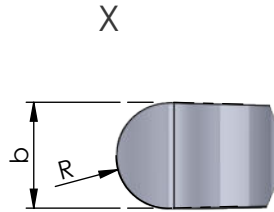
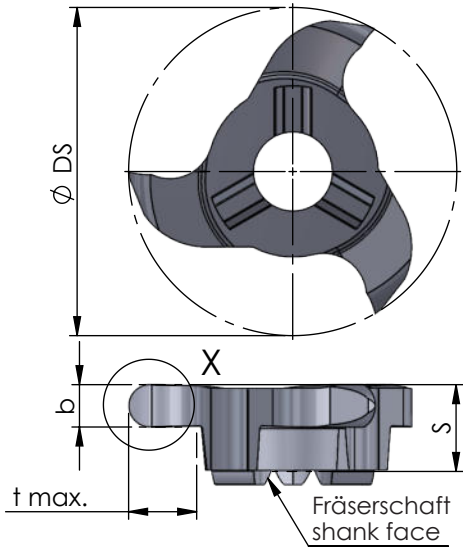
Typ Z12

Vollradius

full radius

D min. 12 mm
t max. = 2.5

D min. 12 mm
t max. = 2.5



Beispielzeichnung
exemplary application

Abmessungen in mm

dimensions in mm

| Bestellnummer part number | D min. | S | R | Ø DS | b +0.03 | t max. | Zähnezahl number of teeth | | | | für Fräterschaft for milling shank |
|------------------------------|--------|-----|------|------|---------|--------|------------------------------|------|-------|------|---------------------------------------|
| | | | | | | | | K10F | AL41F | P18C | |
| Z12.0005.10 | 12 | 3.5 | 0.5 | 11.7 | 1.0 | 2.5 | 3 | ● | ● | | ZH10... |
| Z12.0007.15 | 12 | 3.5 | 0.75 | 11.7 | 1.5 | 2.5 | 3 | ● | ● | | |
| Z12.0010.20 | 12 | 3.5 | 1.0 | 11.7 | 2.0 | 2.5 | 3 | ● | ● | | |
| Z12.0011.22 | 12 | 3.5 | 1.1 | 11.7 | 2.2 | 2.5 | 3 | ● | ● | | |
| Z12.0015.30 | 12 | 3.5 | 1.5 | 11.7 | 3.0 | 2.5 | 3 | ● | ● | | |

Weitere HM Sorten können Sie in der Sortenübersicht im Kapitel "Technische Hinweise" und der Preisliste finden.

Bestellbeispiel:
für Sorte AL41F:
Z12.0005.10/AL41F

More carbide grades you can find in the grades summary in the chapter "technical instructions" and in the price list.

order-example:
grade AL41F:
Z12.0005.10/AL41F