

# NUTSTOSSEN

von Längsnuten nach  
DIN 138 und DIN 6885

broaching keyways according  
DIN 138 und DIN 6885

# Typ NPU

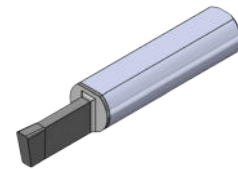
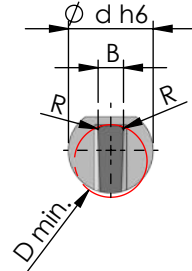
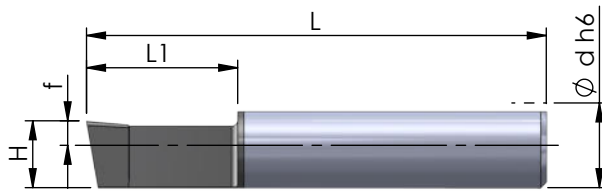
Schneideinsatz

D min. 6 - 7 mm  
Toleranzklasse H9 / D9 / C11

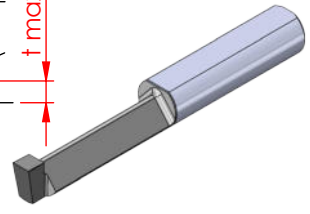
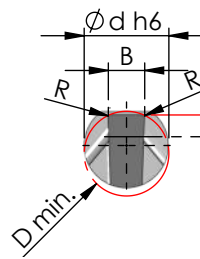
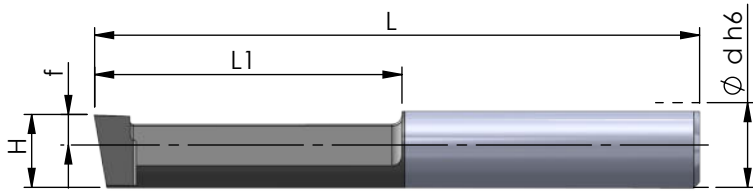
insert

D min. 6 - 7 mm  
tolerance grade H9 / D9 / C11

NPU.0... ..



NPU.0298.01.2 / NPU.0300.01.2 / NPU.030D.01.2



Abmessungen in mm

dimensions in mm

Bestellnummer part number	Nenngröße nominal size	Schneideinsatz nach DIN insert according DIN	D min.	B	R	H +0.05	f	L	L1	Ø d h6	t max.	Material			für Klemmhalter for toolholder type
												K10F	AL41F	P18C	
NPU.020H.01.1	2	H9 DIN 6885	6	2.02	0.1	5.5	2.0	38	12.5	7	-	●	●	●	NHU...
NPU.030H.01.1	3		7	3.02	0.1	6.2	2.7	38	12.5	7	-	●	●	●	
NPU.040H.01.1	4		7	4.02	0.1	6.2	2.7	40	15	7	-	●	●	●	
NPU.040H.02.2	4		7	4.02	0.2	6.2	2.7	50	25	7	-	●	●	●	
NPU.050H.02.2	5		7	5.02	0.2	5.8	2.3	50	25	7	-	●	●	●	
NPU.020D.01.1	2	D9 DIN 6885 Gleitsitz sliding fit	6	2.035	0.1	5.5	2.0	38	12.5	7	-	●	●	●	
NPU.030D.01.2	3		7	3.035	0.1	6.2	2.7	50	25	7	1.8	●	●	●	
NPU.0210.03.1	2	C11 DIN 138 Standard	6	2.1	0.35	5.5	2.0	38	12.5	7	-	●	●	●	
NPU.0310.03.1	3		7	3.1	0.35	6.2	2.7	38	12.5	7	-	●	●	●	
NPU.0310.05.1	3		7	3.1	0.5	6.2	2.7	38	12.5	7	-	●	●	●	
NPU.0410.05.1	4		7	4.1	0.5	6.2	2.7	40	15	7	-	●	●	●	
NPU.0410.05.2	4		7	4.1	0.5	6.2	2.7	50	25	7	-	●	●	●	

Weitere HM Sorten können Sie in der Sortenübersicht im Kapitel "Technische Hinweise" und der Preisliste finden.

Bestellbeispiel:  
für Sorte AL41F:  
NPU.020H.01.1/AL41F

More carbide grades you can find in the grades summary in the chapter "technical instructions" and in the price list.

order-example:  
grade AL41F:  
NPU.020H.01.1/AL41F

