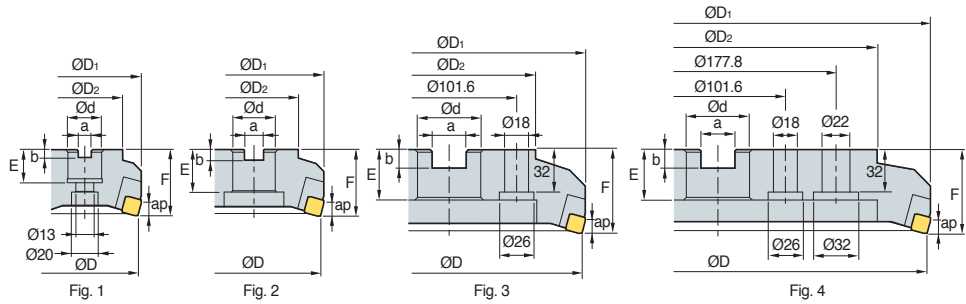
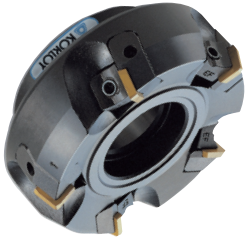


# EF(M)4000



Designation	ØD	ØD <sub>1</sub>	ØD <sub>2</sub>	Ød	a	b	E	F	ap	kg	Fig.
EF 4080R/L	80	89	57	25.4 (27)	9.5 (12.4)	6 (7)	25 (22)	50	8.0	1.5	1
(EFM) 4100R/L	100	108	70	31.75 (32)	12.7 (14.4)	8 (8)	32 (28)	50	8.0	2.1	2
4125R/L	125	133	87	38.1 (40)	15.9 (16.4)	10 (9)	38 (30)	63	8.0	3.8	2
4160R/L	160	168	107	50.8 (40)	19.0 (16.4)	11 (9)	38 (30)	63	8.0	5.5	2
4200R/L	200	208	130	47.625 (60)	25.4 (25.7)	13.5 (14)	38 (38)	63	8.0	8.2	3
4250R/L	250	257	180	47.625 (60)	25.4 (25.7)	13.5 (14)	38 (38)	63	8.0	13.4	3
4315R/L	315	322	240	47.625 (60)	25.4 (25.7)	13.5 (14)	38 (38)	63	8.0	21.2	4

( ) Metric size

## Available inserts

SFCN



Designation	Cermets		Coated							Uncoated		page						
	CN2000	CN30	NCM325	NG5330	NCM535	NCM545	PC2010	PC3600	PC3700	PC6510	PC9530		PC9540	PC5300	PC5400	ST30A	G10	H01
SFCN 1203EFR																		● E20

## Available arbors

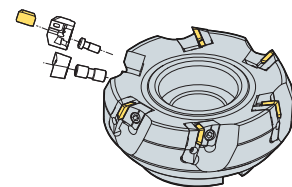
Designation	General arbor	NC arbors	
		EF	EFM
EF 4080R/L	NT*□□ (MU)-FMA25.4-25-□□	BT**□□ -FMA25.4-□□	FMC27
(EFM) 4100R/L	NT*□□ (MU)-FMA31.75-□□	BT**□□ -FMA31.75-□□	FMC32
4125R/L	NT*□□ (MU)-FMA38.1-□□	BT**□□ -FMA38.1-□□	FMB40
4160R/L	NT*□□ (MU)-FMA50.8-□□	BT**□□ -FMA50.8-□□	FMB40
4200R/L	NT*□□ (MU)-FMA47.625-25, KCP-8***	BT**□□ -FMA47.625-□□	FMB60
4250R/L	NT*□□ (MU)-FMA47.625-25, KCP-8***	BT**□□ -FMA47.625-□□	FMB60
4315R/L	KCP-8*** (Center ring plug)		

\*□□-NT number \*\*□□-BT number \*\*\*Over milling 5

## Recommended cutting condition

Workpiece	Cutting condition		Grades
	vc (m/min)	fz (mm/t)	
K	75~125	0.05~0.30	H01

Assembling



## Parts

Specification	Locator	Wedge	Wedge screw	Locator screw	Wrench
Ø80~Ø315	LEF4R/L LEF4R1*/L1*	WEFR/L	DHA0821F	LTX0512	HW40

\*: Ø80~Ø100

Available inserts E20 Available arbors and bolt E400~E402

