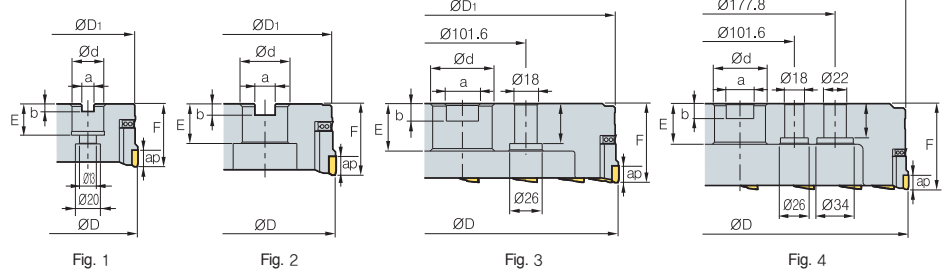
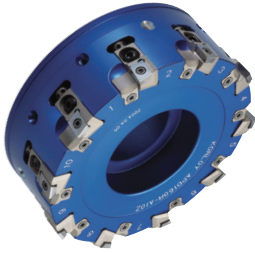


APD(M)-A



Cartridge + insert



AA
90°
• AR: 6°
• RR: 5°~9°

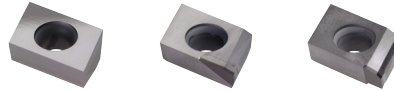
(mm)

Designation	⊙	ØD	ØD ₁	Ød	a	b	E	F	ap	Max rpm	kg	Fig.	
APD	080R/L-A6Z	6	80	76	25.4 (27)	9.5 (12.4)	6 (7)	25 (22)	50	10	16000	0.75	1
(APDM)	100R/L-A6Z	6	100	95	31.75 (32)	12.7 (14.4)	8 (8)	32 (28)	50	10	15000	0.95	2
	125R/L-A8Z	8	125	120	38.1 (40)	15.9 (16.4)	10 (9)	38 (30)	63	10	12500	1.8	2
	160R/L-A10Z	10	160	155	50.8 (40)	19.0 (16.4)	11 (9)	38 (30)	63	10	10000	2.9	2
	200R/L-A12Z	12	200	195	47.625 (60)	25.4 (25.7)	14 (14)	38 (38)	63	10	8000	4.0	3
	250R/L-A16Z	16	250	245	47.625 (60)	25.4 (25.7)	14 (14)	38 (38)	63	10	6500	6.3	3
	315R/L-A18Z	18	315	310	47.625 (60)	25.4 (25.7)	14 (14)	38 (38)	80	10	5000	11.3	4

() Metric size

Available inserts

CDEW-XCF CDEW-XAF, NAF CDEW-XAW, NAW



Designation	Uncoated			PCD	page
	H01	G10	ST30A	DP200	
CDEW	1204R-XCF	●			E06 E07
	1204L-XCF				
	1204R-XAF			●	
	1204L-XAF				
	1204R-NAF			●	
	1204L-NAF				
	1204R-XAW			●	
	1204L-XAW				
	1204R-NAW			●	
	1204L-NAW				

Available arbors

Designation	General arbor	NC arbors
APD	080R/L NT*□□(M/U)-FMA25.4-25	BT**□□-FMA25.4
(APDM)	100R/L NT*□□(M/U)-FMA31.75-□□	BT**□□-FMA31.75
	125R/L NT*□□(M/U)-FMA38.1-□□	BT**□□-FMA38.1
	160R/L NT*□□(M/U)-FMA50.8-□□	BT**□□-FMA50.8
	200R/L NT*□□(M/U)-FMA47.625-25, 250R/L KCP-8***	BT**□□-FMA47.625-□□
	315R/L KCP-8*** (Center ring plug)	-

*□□-NT number **□□-BT number ***Over milling 5

Recommended cutting condition

Workpiece	Cutting condition		Grades
	vc (m/min)	fz (mm/t)	
Aluminum	1,000~4,000 500~2,500	0.05~0.30 0.05~0.20	DP200 H01

Parts

Specification								
Ø80~Ø315	LAPDR/L-AJ	CAPDR/L-AJ	PTMA0411	FTNA0411	AZ0514	BHA0619-NYLOK	TW15S	HW50

Available inserts E06, E07 Available arbors and bolt E400~E402

